



LB-Series Digital DC Resistive Load Banks - Non-Constant Current (up to 1200 Amps)



LB-Series DC Load Bank

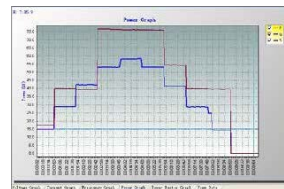
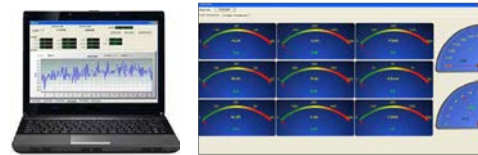
Product Overview

For Non-Constant Current DC testing applications model options range from small, portable, low-power units, to high-power indoor or outdoor permanent load solutions. PC software controls offer advanced load profile solutions for working within simple to complex testing applications of various battery power systems, UPS systems, Data centers, power supplies, DC systems, and other critical DC power sources. Design elements incorporate a robust steel outer chassis with isolated interior chambers for control and load elements. This ensures electrical components are kept away from dirt and debris for longlife reliability in harsh test environments. Portable options include lifting eyes and caster wheels while permanent and outdoor rated units are available. All units come with multiple built-in automatic safety shutdowns and manual override shutdown. Other Voltage / Amp rating versions available.

Features

- Digital metering for high-precision data read-out
- User controlled manually or through software with programmed load profile
- Detailed data management, analysis, and report generation through software
- Automatic load testing allows user to set custom periods of power and time
- Display of current, voltage, and time
- Emergency manual stop button for quick termination of load test if required
- Automatic stop protection for adverse conditions including over-load, over-voltage, high temperature, short-circuit

Advanced Load Control & Data Management Software



Technical Specifications	
Voltage Versions	12, 24, 36, 48, 52, 120, 270 & 480 VDC - Others Available
Amp Models	1 - 1,200 Amps
Duty Cycle	Continuous
Resolution	1 Amp
Configuration	+, - and ground connector
Digital Display	LCD multiple function display meter
Communication	RS232/485, USB port provided
Cooling	Forced air cooling
Environmental	-10 – 50 °C (14 – 122 °F), ≤95% RH
Control	Local panel control or laptop control

Order Includes

- LB-DC Load Bank
- 10m (30ft.) RS485 software cable
- RS485/RS232/USB converter
- Data management software

Product Highlights

Eagle Eye Power Solutions DC Non-Constant Current Load banks are available in multiple voltage and current configurations. They are used for testing DC power systems whenever a constant current load is not required. Single and multi-voltage versions are available to provide versatility and flexibility when performing DC load testing. The Digital Load Controls provide flexibility and include both local unit mounted switches plus advanced load control remote control using the Advanced load control software for laptop operation. This includes the ability to control, monitor and record load tests with data exportable for reporting and historical records. Local manual control switches and Digital Volt & Amp displays for monitoring load conditions are also included. Designs can be configured for portable or permanent installation.

Typical Load Bank Applications & Markets

System Testing Applications

- DC Power System Commissioning / Start-up
- DC Power Equipment OEM Factory Production Test Cells
- Product R&D and Life Cycle Testing
- DC Power Supply OEM R&D Test Cells
- UPS Power System OEM's
- DC Charger Testing
- Electric Vehicle Power Equipment Testing

Service / Other Applications

- Generator Set Annual Preventative Maintenance
- DC Equipment Preventative Maintenance
- Installed DC Power Equipment Preventative Maintenance
- UPS Power System Testing
- DC Power System Commissioning / recommissioning after modification
- Locomotive DC Power System Testing
- Marine DC Power System Testing
- Rental Market DC Power Equipment

Ordering Information

Model No.	Description	Dimensions	Weight
LB-12/24-200	LB-12/24-200 - 12/24 VDC 200 Amp Digital Load Bank	41 x 29 x 50 cm	35 kg
LB-12/24-400	LB-12/24-400 - 12/24 VDC 400 Amp Digital Load Bank	48 x 45 x 60 cm	60 kg
LB-24/48-150	LB-24/48-150 - 24/48 VDC 150 Amp Digital Load Bank	41 x 29 x 50 cm	35 kg
LB-24/48-300	LB-24/48-300 - 24/48 VDC 300 Amp Digital Load Bank	48 x 30 x 57 cm	50 kg
LB-24/48-500	LB-24/48-500 - 24/48 VDC 500 Amp Digital Load Bank	69 x 40 x 57 cm	80 kg
LB-26/52-150	LB-26/52-150 - 26/52 VDC 150 Amp Digital Load Bank	41 x 29 x 50 cm	35 kg
LB-26/52-300	LB-26/52-300 - 26/52 VDC 300 Amp Digital Load Bank	48 x 30 x 57 cm	50 kg
LB-48-500	LB-48-500 - 48VDC 500 Amp Digital Load Bank	69 x 40 x 57 cm	80 kg
LB-52-500	LB-52-500 - 52VDC 500 Amp Digital Load Bank	69 x 40 x 57 cm	80 kg
LB-24-270-600	LB-24-270-600 - 24/270 VDC 600 Amp Digital Load Bank	198 x 90 x 134 cm	150 kg
LB-12-480-500	LB-12-480-500 - 12/480 VDC 500 Amp Digital Load Bank	198 x 90 x 134 cm	150 kg
LB-24-270-600	LB-24-270-600 - 24/480 VDC 500 Amp Digital Load Bank	198 x 90 x 134 cm	175 kg
LB-24-270-900	LB-24-270-900 - 24/270 VDC 900 Amp Digital Load Bank	198 x 110x 160 cm	190 kg
LB-24-270-1200	LB-24-270-1200 - 24/270 VDC 1200 Amp Digital Load Bank	198 x 110 x 160 cm	200 kg