



BATTERY MANAGEMENT SYSTEM HARDWARE CONFIGURATION DIRECTIVES

02/25/2023

Installation Requirements

- **MAIN COMPONENTS**

- Batteries
- Battery Modules - BATMOD
- String Modules - STRMOD
- Control Modules - CONMOD

- **ACCESSORIES**

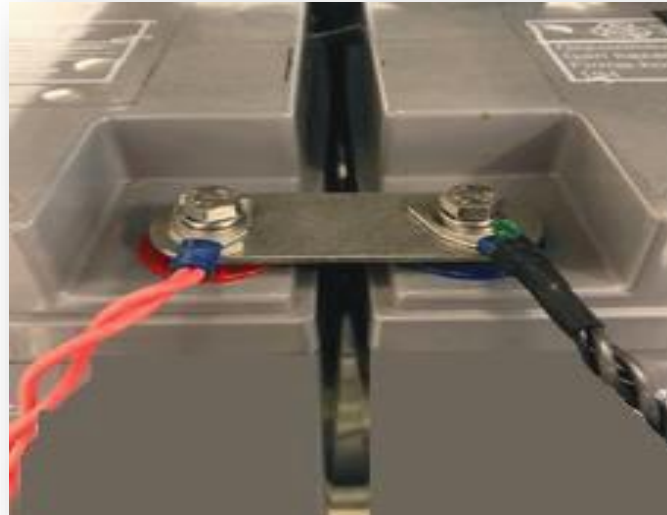
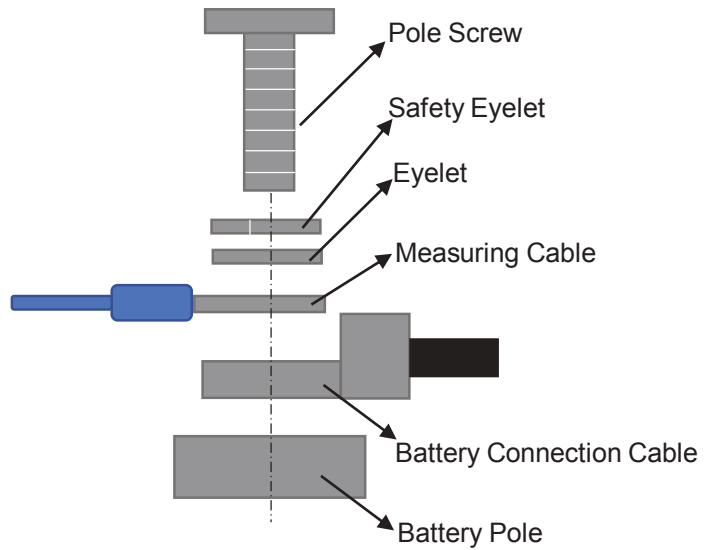
- Data Cables
- Measuring Cables
- Current Measuring Cable
- Current Sensor
- Power Supply

- **OTHERS**

- Screwdriver and Socket Set
- Safety equipment

Step 1.

- Connect the measuring cables to the batteries.



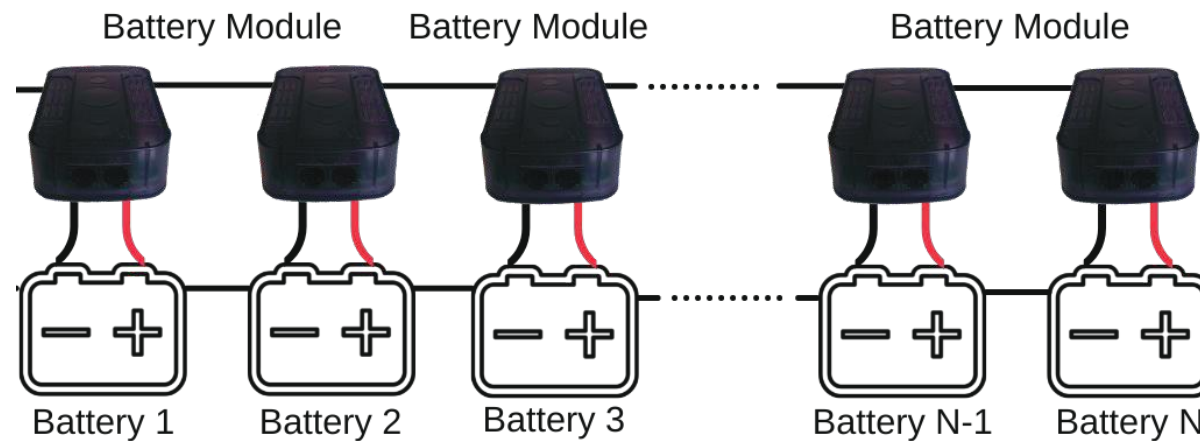
Step 2.

- Connect the BATMODs to the end of the measuring cable.



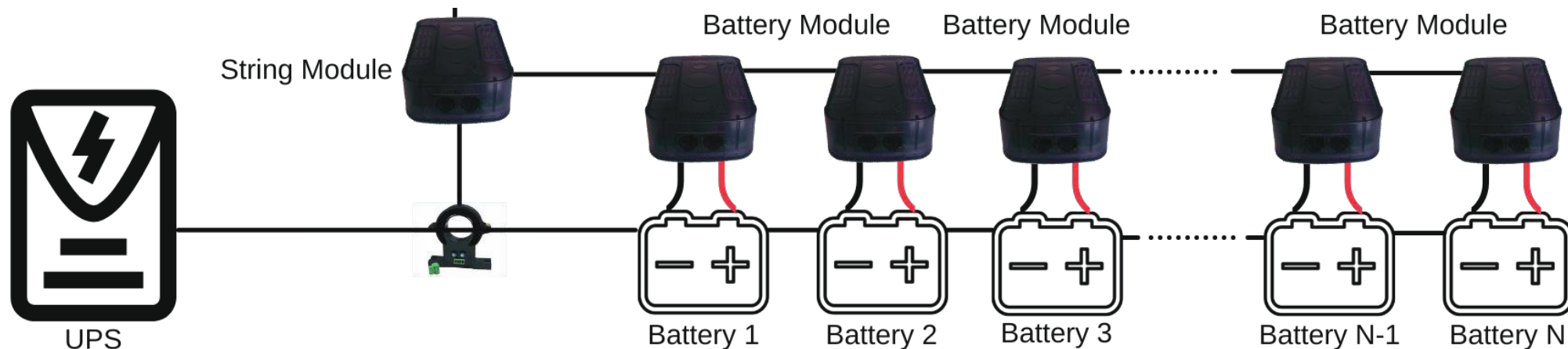
Step 3.

- Connect the data cable from J3 to J2 from the 1st battery to the 2nd battery.
- Repeat these instructions for each string.



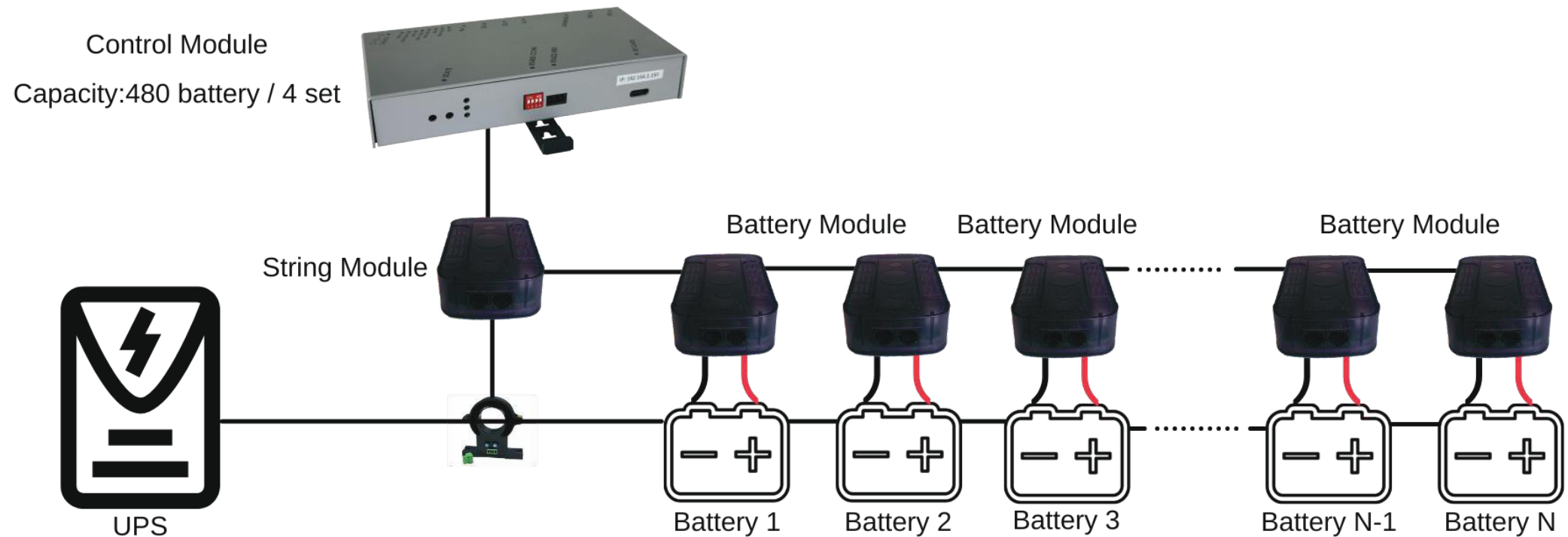
Step 4.

- Connect the J3 input of the STRMOD to the empty J2 of the 1st battery.
- Connect the current measurement cable to the STRMOD. Place the current sensor on the end of the cable.
- Pass the jumper cable from the power supply to the 1st battery inside the current sensor.



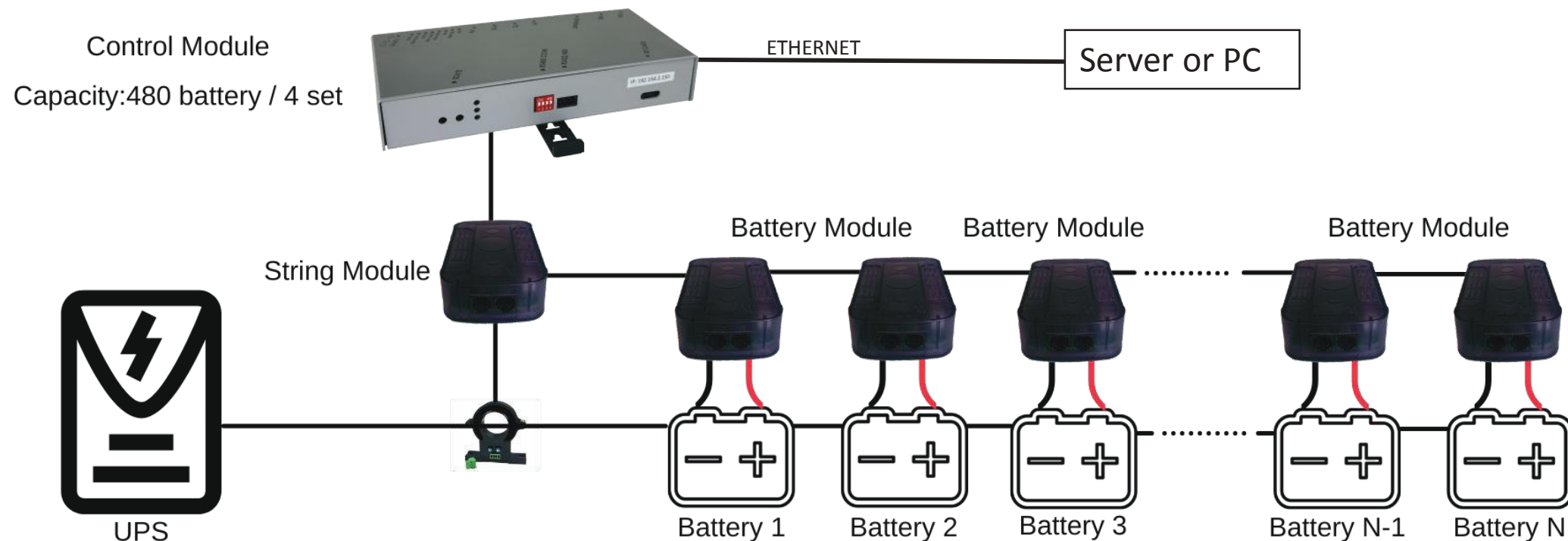
Step 5.

- Connect STRMOD's empty J2 connector to any of CONMOD's 4 connectors via data cable.



Step 6.

- Finally, powered the CONMOD by the adapter. An ethernet connection is made.



SYSTEM ARCHITECTURE

